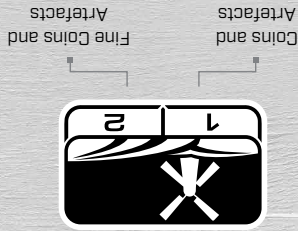


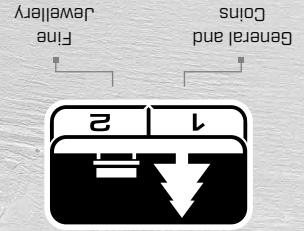
For all salty conditions – dry sand, wet sand, surf and underwater.

### BEACH



Ideal for detecting in historical fields for the widest range of target sizes.

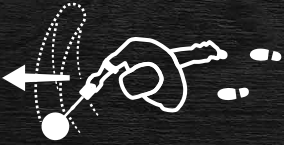
### FIELD



Great for high-trash recreational areas, including most general detecting.

### PARK

## SEARCH MODES



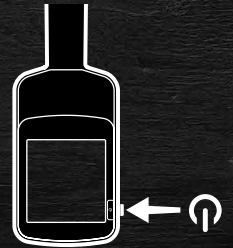
GO  
DETECTING



NOISE  
CANCEL



SELECT  
SEARCH MODE



TURN  
ON



## QUICK START



# X-TERRA PRO

## GETTING STARTED GUIDE

This Getting Started Guide and the full length X-TERRA PRO® User Manual are available to download online.

Get these languages and more:

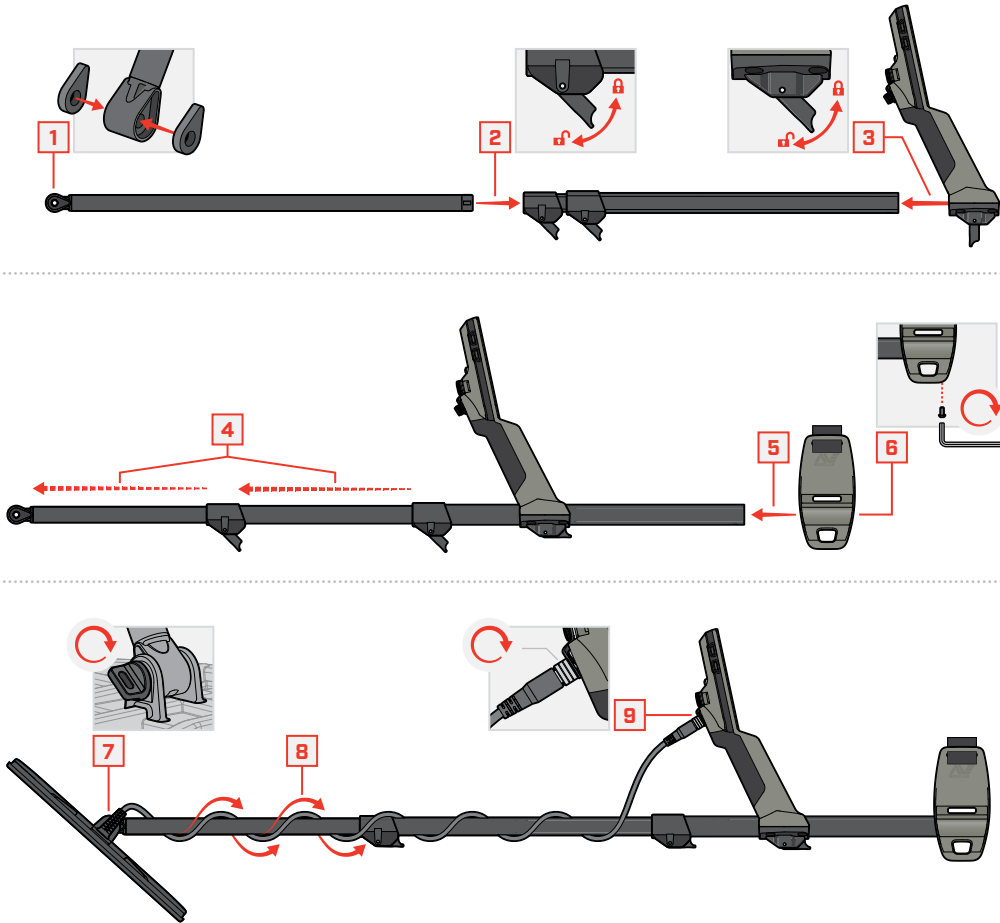
- DE Deutsch
- FR français
- KR 한국어
- RU русский
- ES Español
- JP 日本語
- PT Português
- ZH 中文

[minelab.com](http://minelab.com)

4901-0418-1

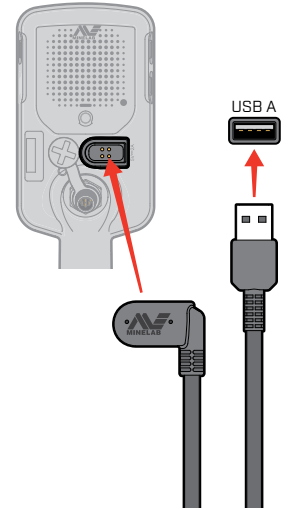


## ASSEMBLY



## CHARGING

5-6 HOURS



**!** Charge your detector with a good-quality USB charger that has a minimum charging capacity of 2A @ 5V.

Risk of USB charger failure if a low quality charger is used.

Look for the following marks on USB chargers:



## CONTROLS & DISPLAY

